

Lights by :

**UNISER**

INDUSTRIES PVT. LTD.

LED LIGHTING | SOLAR POWER | SMART AUTOMATION

**X**

Lighting Design by :  
studio

**SOL**

ARCHITECTURAL LIGHTING DESIGN

**Complete Architectural Lighting & Design Services**



# LIGHTING DESIGN PROCESS

## Construction Documentation

- 1. COORDINATED LIGHTING LAYOUTS, SECTIONS, DETAILS
- 2. COMPLETE BOQ WITH CUT SHEETS & INSTALLATION MANUALS
- 3. REVIEWING VENDOR DOCUMENTATION / QUESTIONS / FIXTURE SUBSTITUTE REQUESTS
- 4. FINAL QUOTATION CHECKS & PROCUREMENT ASSISTANCE

## Concept Design

- 1. LIGHTING DESIGN PHILOSOPHY & CONCEPT STATEMENT
- 2. SKETCHES / CONCEPT BOARDS
- 3. PRELIMINARY LIGHTING LAYOUTS
- 4. CONCEPTUAL LIGHTING PRESENTATION
- 5. PRELIMINARY BOQ & ESTIMATE

## Installation supervision Site Assistance

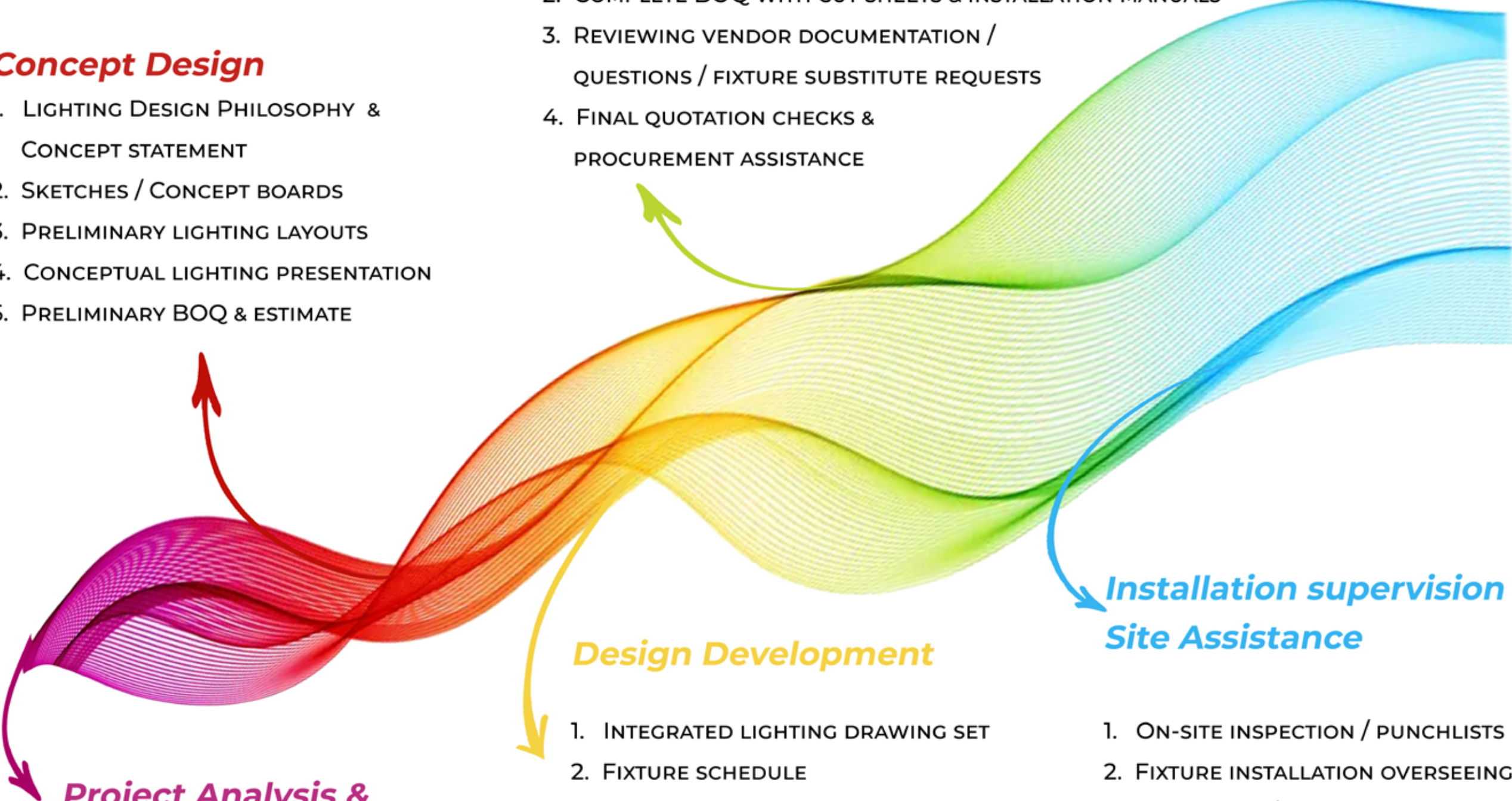
- 1. ON-SITE INSPECTION / PUNCHLISTS
- 2. FIXTURE INSTALLATION OVERSEEING AND AIMING / FOCUSING
- 3. AUTOMATION SCENE PROGRAMING & GUIDANCE

## Design Development

- 1. INTEGRATED LIGHTING DRAWING SET
- 2. FIXTURE SCHEDULE
- 3. LIGHT LEVEL CALCULATIONS
- 4. SITE MOCK-UPS (AS & WHEN REQUIRED)
- 5. BOQ WITH TECHNICAL SPECIFICATIONS AND PROCUREMENT DOCUMENTATION
- 6. CONTROL INTENT LAYOUTS

## Project Analysis & Research

- 1. SCOPE - KICK-OFF MEETING
- 2. CLIENT BRIEFING
- 3. PROPOSAL
- 4. SITE SURVEYS/ VISITS
- 5. FORMULATE DESIGN GOALS



# PROJECT ANALYSIS AND RESEARCH



## Design Fee

Sr. No.	Project stage	Percentage
1	Pre-Design, Research	20%
2	Concept Design	30%
3	Design Development	30%
4	Construction Documentation	10%
5	Installation Administration	10%
<b>Grand total</b>		<b>100%</b>

\* Fees proposed are for a private residence of \_\_\_\_\_ sq. ft area

## Site Visits

1. Architect/Client meetings and vendor visits within Mumbai are covered for a maximum of five visits per stage.
2. The expenses incurred during out of Mumbai site visits (travel, lodging, etc.) shall be over and above the mentioned fees and shall be borne by the client.
3. Site visits outside of Mumbai are limited to a maximum of two per stage as per the stages mentioned in the document. If this exceeds, a mutually agreeable fee will be charged per visit.

## Contract terms & conditions

1. The Fee Proposal covers all the professional charges for deliverables mentioned in this document
2. All the designs and effects are furnished as per approved make and technicalities. Any luminaires selected by the architect or the client, not adhering to the standards specified will be under their sole responsibility.
3. Electrical works will be under the client's scope.
4. Project timeline considered is of 12 months. In case the project is delayed beyond the accepted timeline, a mutually agreed fee will be charged on a month-to-month basis.

Ultra CHS, Lt. Dilip Gupte Rd, Mahim Mumbai - 400016

+91-9819976964

## Architectural Intent

### Users

Age, Lifestyle, Likes and dislikes, Personal preferences

### Geographical location

Terrain, Urban/ rural, Open/ crowded, Rains/ daylight quality

### Architect's thought process

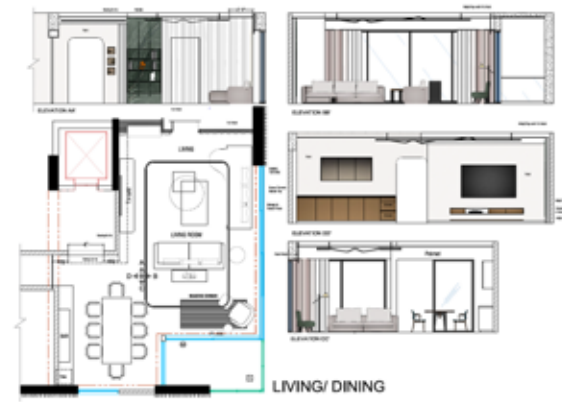
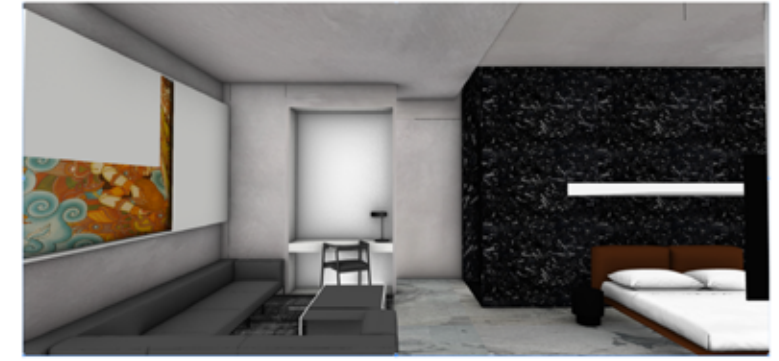
Any special considerations, Design importance, Specific elements, What do you want the space to feel like, What do you want the space to portray

### Architectural Style

Minimalist / Contemporary / Classical/ Gothic/ European / Turkish/ Indian/ Vernacular, etc., User experience  
Areas to be designed - Façade/ Landscape/ Interiors, Focal point of the design, Important elements, Materials used

### Design Intent/ Lighting Intent

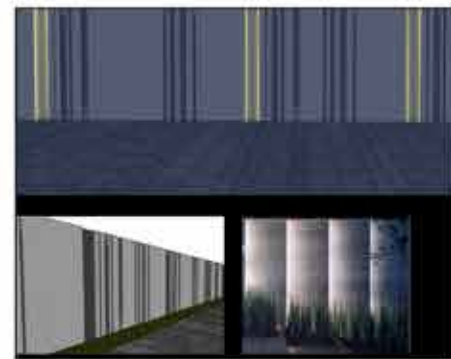
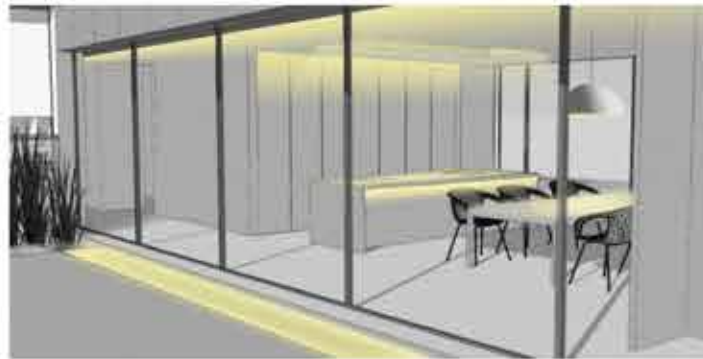
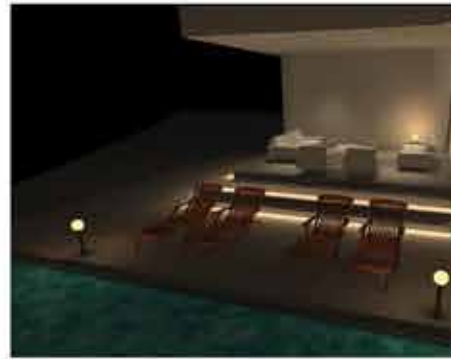
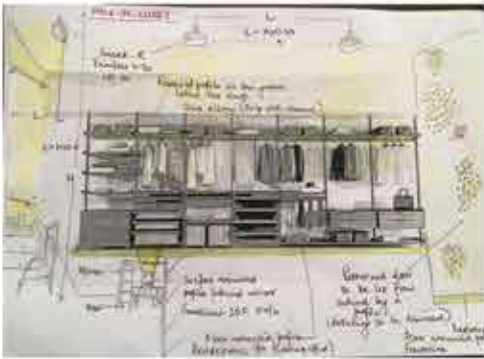
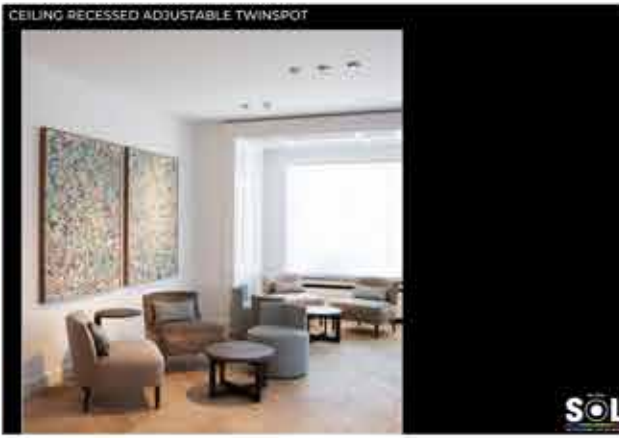
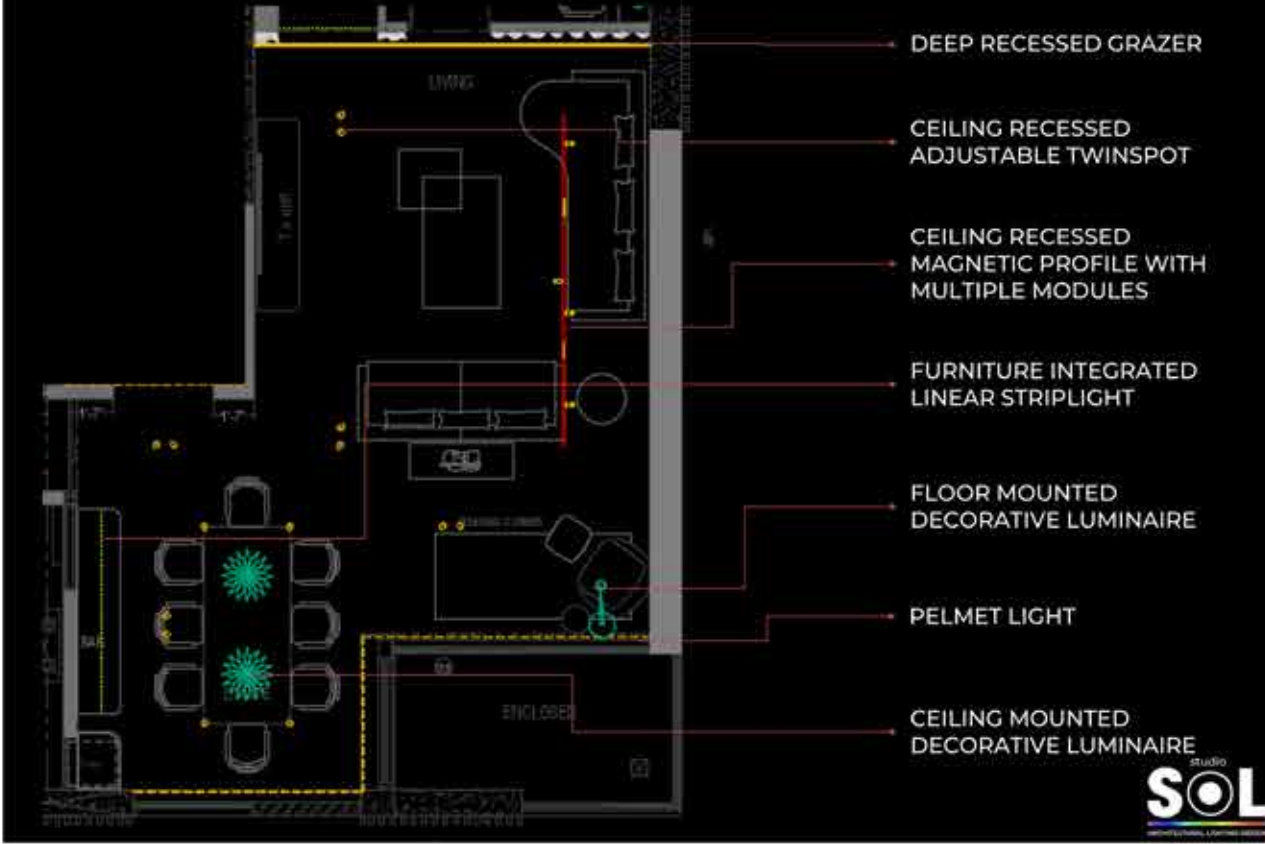
Direct /Indirect, Decorative / architectural, Obvious/ Inconspicuous, Classical / contemporary, Integrated





# CONCEPT DESIGN

## LIVING & DINING AREA



# DESIGN DEVELOPMENT

XYZ RESIDENCE



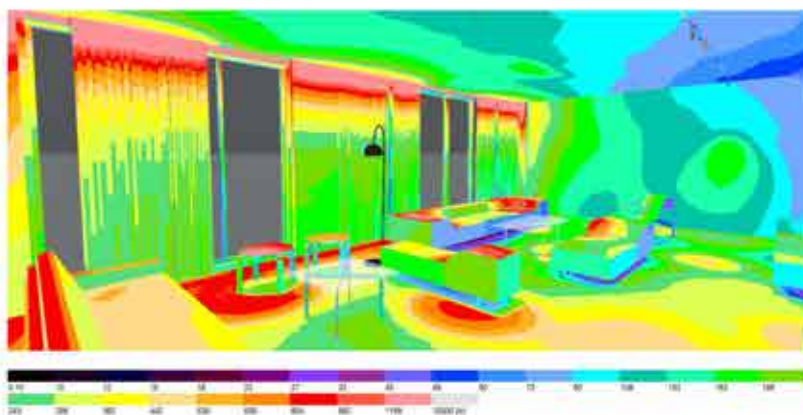
XYZ RESIDENCE



XYZ RESIDENCE



## Images



Building 1 - Storey 1 - LIVING + DINING + LOUNGE SEATING AREA (Light scene 1)

## Summary



Ground area	107.22 m <sup>2</sup>	Clearance height	3.000 m
Reflection factors	Ceiling: 70.0 % Walls: 47.7 % Floor: 20.0 %	Mounting height	0.000 m - 3.019 m
Maintenance factor	0.80 (lived)	Height working plane	0.800 m
		Wall zone mounting plane	0.000 m

Building 1 - Storey 1 - LIVING + DINING + LOUNGE SEATING AREA (Light scene 1)

## Summary

### Results

	Symbol	Calculated	Target
Working plane	$E_{\text{horizontal}}$	496 lx	≥ 500 lx
	$\sigma$	0.095	≥ 0.60
Glare valuation <sup>(1)</sup>	$R_{gl,max}$	24	≤ 19
Energy estimation <sup>(2)</sup>	Consumption	[2209.06 - 3405.60] kWh/a	max. 3800 kWh/a
	Lighting power density	11.55 W/m <sup>2</sup> 2.31 W/m <sup>2</sup> /100 lx	-

(1) Based on a average glare index of 16.000000 (LUX) and a 1000000.00  
(2) Calculated using DIALux 5.10.0.0

Minimum profile: 0.000 m, maximum: 0.000 m, average: 0.000 m

### Luminaire list

pcs.	Manufacturer	Article No.	Article name	R <sub>gl</sub>	P	Φ	Luminous efficacy
5	Delta Light	23304-0000	M - LED LINE HE SOFT 1 x 11,6W 930 MDL	24	13.0 W	323 lm	24.8 lm/W
20	Delta Light	24431-9335	MS2 - SPY 391 93040 DIMS	17	20.0 W	869 lm	43.4 lm/W
5	Delta Light	424 612 04-981 MDL	M - DOT.COM M4 93014 MDL	-	4.0 W	460 lm	114.9 lm/W
1	Delta Light	424 x42 12-92	DOT.COM L WALLWASH L2 (ST) 927	-	29.0 W	1739 lm	60.0 lm/W
21	Endo Lighting	ERK070RS		-		2641 lm	∞ lm/W
6	FLOS S.p.A.	05.8035	[FBR768] ECLECTIC 70 ADJ SOFT	-5	9.9 W	571 lm	57.6 lm/W
1	FLOS S.p.A.	A1400057	2097/30	-	450.0 W	2789 lm	6.2 lm/W
1	FLOS S.p.A.	46366020	SUPERARCHEMOON	20	205.0 W	887 lm	14.0 lm/W



# CONSTRUCTION DOCUMENTATION

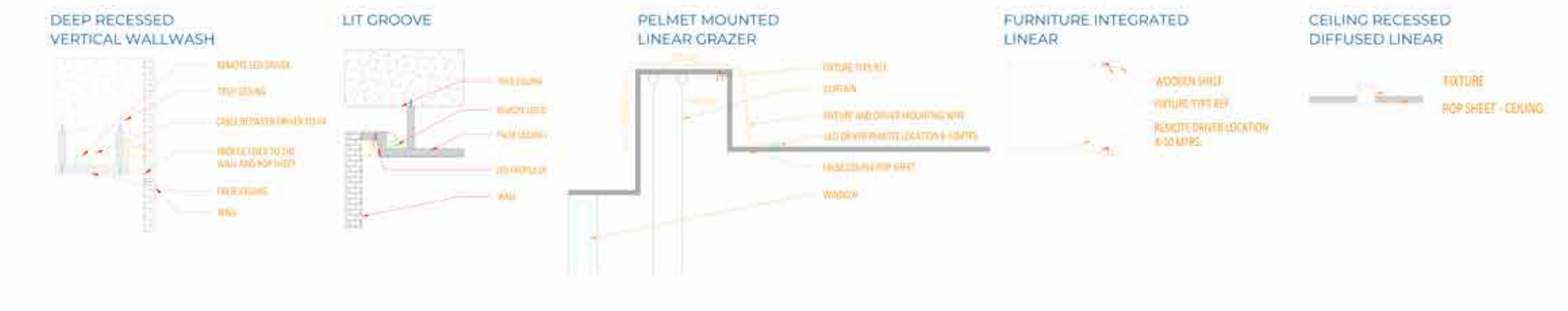
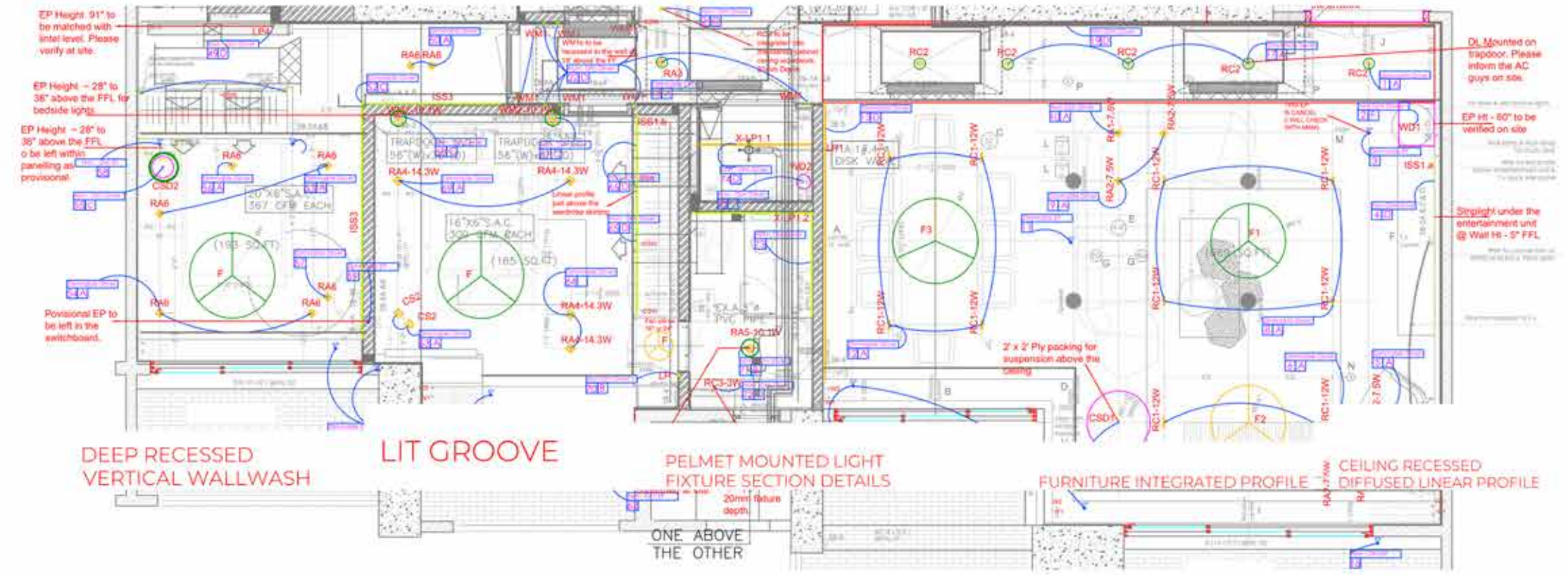


✓ SOL Section Details for lighting	red	Continu...	Defa...	0
✓ SOL-Ceiling Lights	40	Continu...	Defa...	0
✓ SOL-Construction Lines	ma...	ACAD_IS...	Defa...	0
✓ SOL-Decorative	122	Continu...	Defa...	0
✓ SOL-Dimensions	red	Continu...	Defa...	0
✓ SOL-Exterior Lights	ma...	Continu...	Defa...	0
✓ SOL-Floor Lights	yel...	Continu...	Defa...	0
✓ SOL-Integrated Lights	60	Continu...	0.30...	0
✓ SOL-Loop in	160	Continu...	Defa...	0
✓ SOL-Notes	95	Continu...	Defa...	0
✓ SOL-Optics	254	..DASHED	Defa...	0
✓ SOL-Text	10	Continu...	Defa...	0

REF CODE	IMAGE	DESCRIPTION	QTY	LIMIT
RA1	[Symbol]	DEEP RECESSED ADJUSTABLE SPOT LIGHT	02	NOS
RA2	[Symbol]	WALL ACCESS ADJUSTABLE SPOT LIGHT	02	NOS
RA3	[Symbol]	REAR ACCESS ADJUSTABLE SPOT LIGHT	02	NOS
RA4	[Symbol]	RECESSED MULTILEVEL SPOT LIGHT	01	NOS
RA5	[Symbol]	RECESSED MULTI-LEVEL SPOT LIGHT	01	NOS
RA6	[Symbol]	RECESSED TINY SPOT LIGHT	16	NOS
RA7	[Symbol]	LED STRIP WITH PROFILE AND DRIVER	15000	NFIRS
RA8	[Symbol]	LED STRIP WITH PROFILE AND DRIVER	36000	NFIRS
RA9	[Symbol]	LED STRIP WITH PROFILE AND DRIVER	15380	NFIRS
RA10	[Symbol]	LED STRIP WITH PROFILE AND DRIVER	21000	NFIRS
RA11	[Symbol]	LED STRIP WITH PROFILE AND DRIVER	30000	NFIRS
RA12	[Symbol]	INCREASED DIFFUSED LINEAR DIRECT PROFILE	200	NFIRS
RA13	[Symbol]	INCREASED DIFFUSED LINEAR DIRECT PROFILE	150	NFIRS
RA14	[Symbol]	WALL MOUNTED UP DOWN LIGHT	02	NOS
RA15	[Symbol]	PROFILE MOUNTED SPOT LIGHT	02	NOS
RA16	[Symbol]	PROFILE MOUNTED MULTI-LED SPOT	02	NOS
RA17	[Symbol]	PROFILE MOUNTED MULTI-LED SPOT	01	NOS
RA18	[Symbol]	FLUSH MOUNTED SPOT LIGHT	02	NOS

**LED DRIVER LEGEND:**

A	DIMMABLE DRIVER ABOVE THE FIXTURE
B	NON DIM DRIVER ABOVE THE FIXTURE
C	DIMMABLE DRIVER - REMOTE LOCATION
D	NON DIM DRIVER - REMOTE LOCATION
E	DIMMABLE DRIVER - RESULT
F	DIMMABLE DRIVER - REMOTE LOCATION
X	TBD - DEPENDING ON THE FIXTURE



PROJECT:

CLIENT:

ARCHITECT:

LANDSCAPE ARCHITECT:

INTERIOR DESIGNER:

MEP CONSULTANT:

**DESIGN PHASE**

<input type="radio"/> PRE-CONCEPT DESIGN	<input type="radio"/> INFORMATION
<input type="radio"/> CONCEPT DESIGN	<input type="radio"/> DISCUSSION
<input type="radio"/> DESIGN DEVELOPMENT	<input checked="" type="radio"/> FOR APPROVAL
<input type="radio"/> CONSTR. DOCUMENTATION	<input type="radio"/> TENDER
<input type="radio"/> TENDER STAGE	<input type="radio"/> CONSTRUCTION

REV.	DESCRIPTION	DATE	NAME

**DRAWING: INTERIOR LIGHTING LAYOUT**


DRAWN:	DATE:	CHECKED:	APPROVED:
AS	07.09.2022	MK	MK
NORTH	DRAWING NO:	SCALE:	REVISION:
	AS SHOWN	1:1	



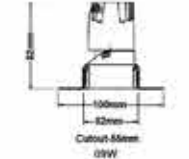
studio SOL																	
BOQ - R0 - XX.YY.2023																	
Project: XYZ Residence																	
Sr. #	Ref. Code	Ref. Image	Ref. Text	Description	IP Rating	Fixture Wattage	Lumen output	Optics	CCT	CRI	Control	Dimensions	Accessories	Make	Model	Unit	Quantity
1	SL1		BETWEEN LINAR VERTICAL RATED PROFILE	LED STRIPLIGHT WITH ALUMINIUM CHANNEL - LED STRIPLIGHT WITH ANODIZED ALUMINIUM CHANNEL - TRACKED LED - TRACK REMOVAL DEVICE	880	15W/M	1350 LM	FOXTED POLY	3000K	90	NA	W: 20mm H: 20mm	MOUNTING CLIP, END CAP	ALS		MS102	11
				NON DIMMABLE LED STRIP LIGHT												NA	2
2	SL2		RECESS MOUNTED CEILING LIGHT - LED STRIPLIGHT WITH ANODIZED ALUMINIUM CHANNEL - TRACKED LED - TRACK REMOVAL DEVICE		880	15W/M	1350 LM	FOXTED POLY	3000K	90	NA	W: 20mm H: 20mm	MOUNTING CLIP, END CAP	ALS	RECESS MOUNT	MS102	12
				NON DIMMABLE LED STRIP LIGHT												NA	2
3	SL3		RECESS MOUNTED CEILING LIGHT - LED STRIPLIGHT WITH ANODIZED ALUMINIUM CHANNEL - TRACKED LED - TRACK REMOVAL DEVICE		880	15W/M	1350 LM	FOXTED POLY	3000K	90	NA	W: 20mm H: 20mm	MOUNTING CLIP, END CAP	ALS	RECESS MOUNT	MS102	13
				NON DIMMABLE LED STRIP LIGHT												NA	2
4	SL4		RECESS MOUNTED CEILING LIGHT - LED STRIPLIGHT WITH ANODIZED ALUMINIUM CHANNEL - TRACKED LED - TRACK REMOVAL DEVICE		880	15W/M	1350 LM	FOXTED POLY	3000K	90	NA	W: 20mm H: 20mm	MOUNTING CLIP, END CAP	100%	ALUMINUM BODY IN ALUMINUM	MS102	14
				NON DIMMABLE LED STRIP LIGHT												NA	2
5	SL5		RECESS MOUNTED CEILING LIGHT - LED STRIPLIGHT WITH ANODIZED ALUMINIUM CHANNEL - TRACKED LED - TRACK REMOVAL DEVICE		880	15W/M	1350 LM	FOXTED POLY	3000K	90	NA	W: 20mm H: 20mm	MOUNTING CLIP, END CAP	80	ALUMINUM BODY	MS102	15
				NON DIMMABLE LED STRIP LIGHT												NA	2
6	SL6		RECESS MOUNTED CEILING LIGHT - LED STRIPLIGHT WITH ANODIZED ALUMINIUM CHANNEL - TRACKED LED - TRACK REMOVAL DEVICE		880	15W/M	1350 LM	FOXTED POLY	3000K	90	NA	W: 20mm H: 20mm	MOUNTING CLIP, END CAP	ALS	ALUMINUM BODY IN ALUMINUM	MS102	16
				NON DIMMABLE LED STRIP LIGHT												NA	2
7	SL7		RECESS MOUNTED CEILING LIGHT - LED STRIPLIGHT WITH ANODIZED ALUMINIUM CHANNEL - TRACKED LED - TRACK REMOVAL DEVICE		880	15W/M	1350 LM	FOXTED POLY	3000K	90	NA	W: 20mm H: 20mm	MOUNTING CLIP, END CAP	ALS	ALUMINUM BODY IN ALUMINUM	MS102	17
				NON DIMMABLE LED STRIP LIGHT												NA	2
8	SL8		RECESS MOUNTED CEILING LIGHT - LED STRIPLIGHT WITH ANODIZED ALUMINIUM CHANNEL - TRACKED LED - TRACK REMOVAL DEVICE		880	15W/M	1350 LM	FOXTED POLY	3000K	90	NA	W: 20mm H: 20mm	MOUNTING CLIP, END CAP	ALS	ALUMINUM BODY IN ALUMINUM	MS102	18
				NON DIMMABLE LED STRIP LIGHT												NA	2
9	SL9		RECESS MOUNTED CEILING LIGHT - LED STRIPLIGHT WITH ANODIZED ALUMINIUM CHANNEL - TRACKED LED - TRACK REMOVAL DEVICE		880	15W/M	1350 LM	FOXTED POLY	3000K	90	NA	W: 20mm H: 20mm	MOUNTING CLIP, END CAP	ALS	ALUMINUM BODY IN ALUMINUM	MS102	19
				NON DIMMABLE LED STRIP LIGHT												NA	2
10	SL10		RECESS MOUNTED CEILING LIGHT - LED STRIPLIGHT WITH ANODIZED ALUMINIUM CHANNEL - TRACKED LED - TRACK REMOVAL DEVICE		880	15W/M	1350 LM	FOXTED POLY	3000K	90	NA	W: 20mm H: 20mm	MOUNTING CLIP, END CAP	ALS	ALUMINUM BODY IN ALUMINUM	MS102	20
				NON DIMMABLE LED STRIP LIGHT												NA	2
11	SL11		RECESS MOUNTED CEILING LIGHT - LED STRIPLIGHT WITH ANODIZED ALUMINIUM CHANNEL - TRACKED LED - TRACK REMOVAL DEVICE		880	15W/M	1350 LM	FOXTED POLY	3000K	90	NA	W: 20mm H: 20mm	MOUNTING CLIP, END CAP	ALS	ALUMINUM BODY IN ALUMINUM	MS102	21
				NON DIMMABLE LED STRIP LIGHT												NA	2
12	SL12		RECESS MOUNTED CEILING LIGHT - LED STRIPLIGHT WITH ANODIZED ALUMINIUM CHANNEL - TRACKED LED - TRACK REMOVAL DEVICE		880	15W/M	1350 LM	FOXTED POLY	3000K	90	NA	W: 20mm H: 20mm	MOUNTING CLIP, END CAP	ALS	ALUMINUM BODY IN ALUMINUM	MS102	22
				NON DIMMABLE LED STRIP LIGHT												NA	2
13	SL13		RECESS MOUNTED CEILING LIGHT - LED STRIPLIGHT WITH ANODIZED ALUMINIUM CHANNEL - TRACKED LED - TRACK REMOVAL DEVICE		880	15W/M	1350 LM	FOXTED POLY	3000K	90	NA	W: 20mm H: 20mm	MOUNTING CLIP, END CAP	ALS	ALUMINUM BODY IN ALUMINUM	MS102	23
				NON DIMMABLE LED STRIP LIGHT												NA	2
14	SL14		RECESS MOUNTED CEILING LIGHT - LED STRIPLIGHT WITH ANODIZED ALUMINIUM CHANNEL - TRACKED LED - TRACK REMOVAL DEVICE		880	15W/M	1350 LM	FOXTED POLY	3000K	90	NA	W: 20mm H: 20mm	MOUNTING CLIP, END CAP	ALS	ALUMINUM BODY IN ALUMINUM	MS102	24
				NON DIMMABLE LED STRIP LIGHT												NA	2

studio SOL																	
BOQ - R0 - XX.YY.2023																	
Project: XYZ Residence																	
Sr. #	Ref. Code	Ref. Image	REF TYPE	Description	IP Rating	Fixture Wattage	Lumen output delivered	Optics	CCT	CRI	CONTROL	Dimensions	Finish	Make	Model	Quantity	Unit
1	RA1		FIXED ROOM + PASSAGE	Ceiling recessed non-adjustable spot - 80mm aluminum body with methacrylate diffuser, Max Adm - 2 - LED (Lumen = 50,000) - LM - 800 (Ta 25°C) - CRI >= 90 - remote driver	920	12 W	840	30°-40°	3000K	90	DAU/DMAN	RECESS DEPTH - 30MM CUT OUT - 50MMx50MM FIXTURE DIA 50MM	WHITE	DELTA LIGHT	TR821 900 W + MOUNTING ACCESSORIES	30	UNIT
2	RA2		ENTRANCE HALLWAY AND LIVING	Ceiling recessed adjustable luminaire - 80° beam, 80° or - On cast aluminum housing-Max Adm - 3 - LED (Lumen = 50,000) - LM - 800 (Ta 25°C) - CRI >= 90 - remote driver	920	9 W	760	27°	3000K	90	DALLORAM	RECESS DEPTH - 30MM CUT OUT - 75MMx75MM FIXTURE DIA 60MM	TR8 Adjusted	DELTA LIGHT	1845 900 W	2	UNIT
3	RA2		PASSAGE AND LIVING AREA	Ceiling recessed adjustable luminaire - 80° beam, 80° or - On cast aluminum housing-Max Adm - 3 - LED (Lumen = 50,000) - LM - 800 (Ta 25°C) - CRI >= 90 - remote driver	920	9 W	750	27°	3000K	90	DAU/DMAN	RECESS DEPTH - 30MM CUT OUT - 75MMx75MM FIXTURE DIA 60MM	TR8 Adjusted	DELTA LIGHT	1845 900 W	2	UNIT
4	RA3		SPACE BEDROOM	Ceiling recessed adjustable spot - 80mm aluminum body with methacrylate diffuser, Max Adm - 2 - LED (Lumen = 50,000) - LM - 800 (Ta 25°C) - CRI >= 90 - remote driver	920	9 W	840	30°	3000K	90	DAU/DMAN	RECESS DEPTH - 30MM CUT OUT - 50MMx50MM FIXTURE DIA 50MM	WHITE	DELTA LIGHT	18214 900 W IN PLASTER 100	4	UNIT
5	RA4		SPACE BATHROOM	Ceiling recessed adjustable spot - 80mm aluminum body with methacrylate diffuser, Max Adm - 2 - LED (Lumen = 50,000) - LM - 800 (Ta 25°C) - CRI >= 90 - remote driver	920	11 W	550	30°	3000K	90	HOK/DMAN	RECESS DEPTH - 75 MM FIXTURE DIA 50MM	TR8 Adjusted	DELTA LIGHT	17017 900 W	2	UNIT
6	RA5		BATHROOM	Ceiling recessed adjustable luminaire - LED fixed spot - recessed aluminum body, anodized aluminum housing, spot PHAROS diffuser - Max Adm - 2 - LED (Lumen = 30,000) - LM - 800 (Ta 25°C) - CRI >= 90 - remote driver	940	9 W	510	30°	3000K	90	NEW/DMAN	RECESS DEPTH - 30MM CUT OUT - 75MMx75MM FIXTURE DIA 60MM	TR8 Adjusted	DELTA LIGHT	18112 900 W + 10112 2000	10	UNIT
7	RA3		STUDY ROOM	Ceiling recessed adjustable luminaire - LED fixed spot - recessed aluminum body, anodized aluminum housing, spot PHAROS diffuser - Max Adm - 2 - LED (Lumen = 30,000) - LM - 800 (Ta 25°C) - CRI >= 90 - remote driver	920	10 W	610	27°-40°	3000K	90	DAU/DMAN	RECESS DEPTH 30MM CUT OUT 75MMx75MM	TR8 Adjusted	DELTA LIGHT	18124 900 W + 10144 2000	2	UNIT
8	RA2		HALLWAY BEDROOM	Ceiling recessed multi beam spot - 80mm aluminum body with methacrylate diffuser, Max Adm - 2 - LED (Lumen = 50,000) - LM - 800 (Ta 25°C) - CRI >= 90 - remote driver	920	13.7 W	980	40°	3000K	90	DAU/DMAN	LENGTH 120 MM WIDTH 80 MM HEIGHT 40 MM	TR8 Adjusted	DELTA LIGHT	18607 900 W	10	UNIT
9	RA2		HALLWAY BEDROOM	Ceiling recessed multi beam spot - 80mm aluminum body with methacrylate diffuser, Max Adm - 2 - LED (Lumen = 50,000) - LM - 800 (Ta 25°C) - CRI >= 90 - remote driver	920	13.7 W	980	40°	3000K	90	DAU/DMAN	LENGTH 120 MM WIDTH 80 MM HEIGHT 40 MM	TR8 Adjusted	DELTA LIGHT	18607 900 W	10	UNIT
10	RA2		HALLWAY BEDROOM	Electromechanical tool for recessed installation in plasterboard ceiling									BLACK	DELTA LIGHT	18302 900 W	30	UNIT
				Aluminum												100	UNIT
11	RA2		FIXED ROOM + PASSAGE	Ceiling recessed adjustable luminaire - LED fixed spot - recessed aluminum body, anodized aluminum housing, spot PHAROS diffuser - Max Adm - 2 - LED (Lumen = 50,000) - LM - 800 (Ta 25°C) - CRI >= 90 - remote driver	920	12 W	840	30°-40°	3000K	90	DALLORAM	RECESS DEPTH - 30MM CUT OUT - 50MMx50MM FIXTURE DIA 50MM	BLACK	DELTA LIGHT	18214 900 W + GREAT SPREAD LENS + TR8	10	UNIT

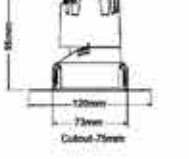
studio SOL									
BOQ - R0 - 07.02.2023									
Project: ARORA RESIDENCE									
Sr. No.	Ref. Code	Image	Text ref	Control	Finish	Quantity	Length	Unit	Make
<b>LIVING &amp; DINING ROOM</b>									
1	SL14		CURTAIN	Dim	NA	1	0	METER	ALS
2	SL15		EDGE COVE	Dim	WHITE	2	10	METER	UNISER
3	RA1		LIVING	Dim	WHITE	5	0	UNIT	UNISER
4	RA1		FOR ART WORK	NON DIM	WHITE	5	0	UNIT	UNISER
5	D-FL1		LIVING			1		UNIT	
6	D-CE1		DINING TABLE			1		UNIT	
<b>DIN PASSAGE</b>									
7	RA1		PASSAGE	Dim	BLACK	4	0	UNIT	UNISER
<b>STUDY ROOM</b>									
8	SL16		LIT GROOVE	NON DIM	BLACK	1	0.6	METER	UNISER
9	RA1		STUDY ROOM	Dim	BLACK	2	0	UNIT	UNISER
10	D-FL1		STUDY ROOM			1		UNIT	
<b>DEN ROOM</b>									
11	RA1		DEN	Dim	BLACK	5	0	UNIT	UNISER
12	RA1		DEN	NON DIM	BLACK	1	0	UNIT	UNISER
13	D-SP1		DEN STUDY			1		UNIT	
14	SL18		CURTAIN	Dim	NA	1	2.8	METER	ALS
<b>COMMON PASSAGE</b>									
15	RA2		PASSAGE	NON DIM	WHITE	1	0	UNIT	UNISER
16	FL1		PASSAGE	NON DIM	TRD	1	0	UNIT	FORMA
<b>DAUGHTER BEDROOM</b>									
17	RA1		TASK	NON DIM	WHITE	2	0	UNIT	UNISER
18	SL19		SMARTING LIGHT	NON DIM	NA	1	1.6	METER	ALS
19	SL20		FURNITURE INTEGRATED	NON DIM	NA	1	0	METER	ALS
20	SL20		FURNITURE INTEGRATED	NON DIM	NA	1	0	METER	ALS
21	SL20		FURNITURE INTEGRATED	NON DIM	NA	1	0	METER	ALS
22	SL20		FURNITURE INTEGRATED	NON DIM	NA	1	0	METER	ALS
23	SL20		FURNITURE INTEGRATED	NON DIM	NA	1	0	METER	ALS



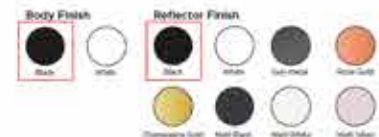
**UNISER RC3**



100mm  
52mm  
Cutout: 60mm ØW



120mm  
73mm  
Cutout: 75mm ØW



**Body Finish**  
Black, White

**Reflector Finish**  
Black, White, Sat. Black, Sat. Gold  
Chromatone Gold, Matt Gold, Night White, Matt Silver

**DESCRIPTION: Trimless Fixed Downlight, Adjustable Downlight**

**Product Code:** UNIS-FDP-TL-02/16

**Additional Features:** Oval, Cut & Pin Spot, Wallwasher available

**Wattages:** 10W/16W

**Beam Angle:** 120 / 240 / 360 / 600

**CCT:** 2700K / 3000K / 4000K / 5000K / 6000K

**CRI:** 80 / 90 (as required)

**THD:** >10

**Material:** Aluminum

**Lumens:** 10lm / W

**Tiltable Angle:** 30D

**Life Expectancy:** 50000 Burning hrs


**IP:** 20

**Control:** Non Dimmable (Phase-cut), Anycolor, DALI, CCT tunable


**Power:** 220-240V, 50 / 60Hz

**Maintenance:** Bottom Maintenance. The Light engine with driver can be serviced from the bottom, without hampering the ceiling.

**DRIVER OPTIONS**




**SPECIAL ADDITIONAL FEATURES**



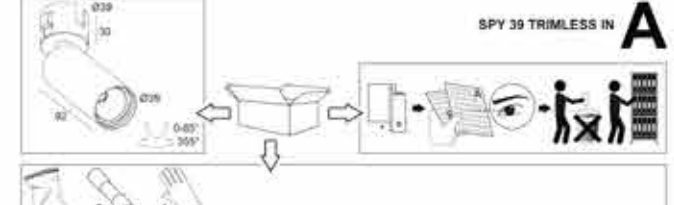
UNISER 8000000000 PVT. LTD. | www.uniser.com | www.uniserengr.com | 91-9907825688 | 91-20-20714465

Wardha, India | Acar Power | LED Lights | Smart Automation | 91-9907825688 | 91-20-20714465





**DELTA LIGHT**  
WWW.DELTALIGHT.COM

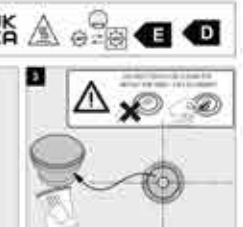
**SPY 39 TRIMLESS IN A**

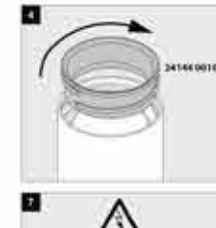


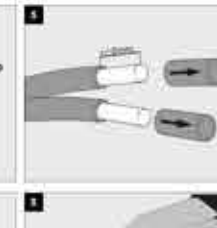
IP20 SELV ENEC CE UK CA

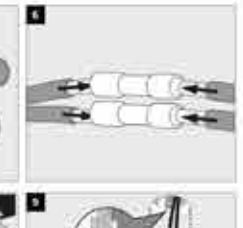


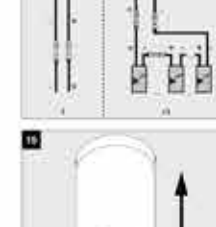


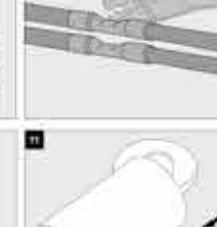


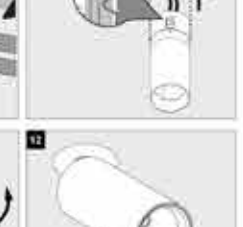












Lights by :

**UNISER**

INDUSTRIES PVT. LTD.

LED LIGHTING | SOLAR POWER | SMART AUTOMATION

**X**

Lighting Design by :  
studio

**SOL**

ARCHITECTURAL LIGHTING DESIGN

## Complete Architectural Lighting & Design Services

Follow us:



[www.uniserledlights.com](http://www.uniserledlights.com)  
[projects@uniserledlights.com](mailto:projects@uniserledlights.com)

Address:

Uniser Industries Pvt Ltd  
414, Lotus House, New Marine Lines,  
Mumbai 400020, MH, India



+91-22-35114465



+91-9867625686

**UNISER**

INDUSTRIES PVT. LTD.

LED LIGHTING | SOLAR POWER | SMART AUTOMATION