

Where Unique Services Create Smarter Spaces

# UNISER SMARTSPACES

ILLUMINATE. AUTOMATE. ELEVATE. TRANSFORM

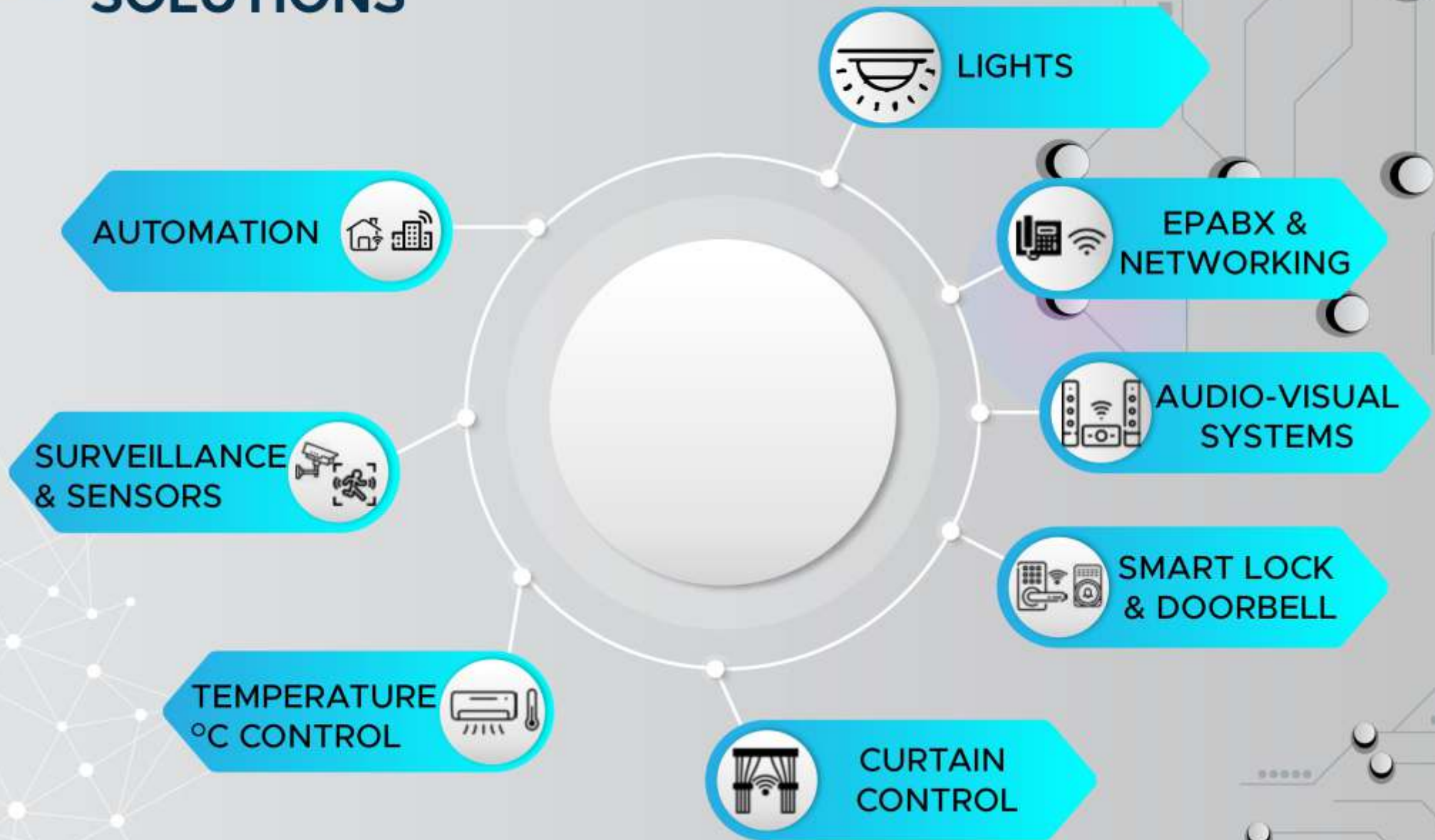


[www.unisersmartspaces.com](http://www.unisersmartspaces.com)

FOLLOW US :  unisersmartspaces



# SYSTEM INTEGRATION SOLUTIONS





# EXPERIENTIAL SOLUTIONS

VIDEO  
CONFERENCING



DIGITAL  
SIGNAGE



AR | VR  
& ROBOTICS



DECORATIVE  
LIGHTS



SMART DIGITAL  
GYM



LUXURY  
FANS



AIR QUALITY  
ENHANCER



SCENT  
SOLUTIONS







# OUR PROCESS



**DEMO  
EXPERIENCE**



**CONSULTATION**



**SYSTEM DESIGN**



**INSTALLATION &  
COMMISSIONING**



**HANDOVER AND  
TRAINING**



**AFTER SALES SERVICES**

The background of the image is a blurred, high-angle view of a city skyline at night, with numerous skyscrapers illuminated. Overlaid on this is a complex, glowing network of white lines and nodes, resembling a digital or neural network. The nodes are bright white points, and the lines connect them in a web-like pattern. The overall color palette is cool, with blues, greys, and whites.

**ILLUMINATE • AUTOMATE**



# AUTOMATION

Automation is essential for modern living, enhancing convenience, security, and energy efficiency. It allows control of smart devices like thermostats, lights, and security systems remotely via smartphone apps, making it indispensable for contemporary homes.

- Audio & Video
- Lighting
- Surveillance & Access Control
- Shading





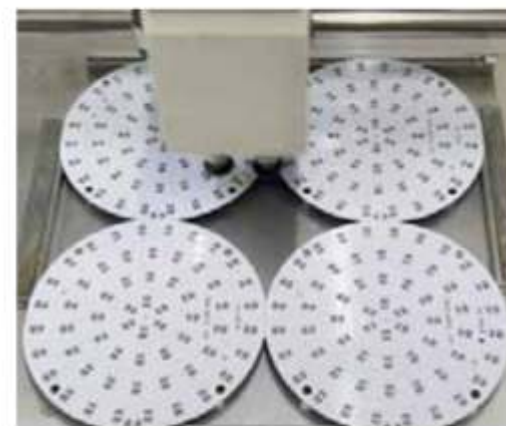


# LIGHTING

## Design Space



## Product Manufacturing





# ARCHITECTURAL LIGHTING







# AUDIO-VISUAL SYSTEMS

We are dedicated to seamlessly merging the forefront of audiovisual technology with a diverse array of home design styles, ensuring that modern innovation harmonizes effortlessly with individual preferences and aesthetics.



**D.** DEFINITIVE TECHNOLOGY  
**B&W** Bowers & Wilkins  
**SONANCE**  
**TRIAD**  **SONOS**



## SMART LOCK & DOORBELL

- KEYLESS ENTRY
- REVOLUTIONISE HOME SECURITY
- TWO-WAY COMMUNICATION
- SEAMLESS INTEGRATION
- REMOTE ACCESS AND MONITORING



## SURVEILLANCE & SENSORS

- REMOTE MONITORING
- INTELLIGENT SECURITY
- ENTRY ALERTS
- CONVENIENT CONTROL
- FAMILY CHECK-INS







## TEMPERATURE °C CONTROL

- REMOTE CONTROL
- ENERGY EFFICIENCY
- CUSTOM SCHEDULES
- ZONE SPECIFIC
- SEAMLESS INTEGRATION



## CURTAIN CONTROL

- ENERGY EFFICIENCY
- AUTOMATED SCHEDULES
- SCENE INTEGRATION
- REMOTE OPERATION
- VOICE CONTROL







**ELEVATE • TRANSFORM**



## VIDEO CONFERENCING

Unlock the full potential of modern communication and visual technology while staying ahead in today's dynamic business landscape.



## DIGITAL SIGNAGE

We also offer tailored digital signage and video wall solutions for retail spaces, enhancing customer engagement and brand visibility





# SMART DIGITAL GYM

- AI-POWERED BRILLIANCE
- DYNAMIC RESISTANCE MAGIC
- PATENTED PRECISION
- SPACE-SAVING WONDER
- ELITE TRAINING PROGRAMS
- TECH-INFUSED STRENGTH
- IMMERSIVE LIGHTING
- ULTIMATE ACCESSORY KIT







## SCENT SOLUTION

- ENHANCES CUSTOMER EXPERIENCE
- STRENGTHENS BRAND IDENTITY
- INCREASES CUSTOMER LOYALTY
- BOOSTS SALES AND ENGAGEMENT
- COST-EFFECTIVE MARKETING TOOL





# AIR QUALITY ENHANCER

- REAL TIME AIR QUALITY MANAGEMENT
- BIOLOGICAL PROCESS
- HUMIDITY REGULATION
- REMOVAL OF VOCs
- ENERGY EFFICIENT
- QUIET OPERATION
- AESTHETIC & MINIMALISTIC DESIGN
- ZERO MAINTENANCE





# LUXURY FANS

**fanzart®**  
LUXURY DESIGNER FANS  
— SINCE 2012 —







# DECORATIVE LIGHTS

SHARE YOUR DESIGN / THEME  
WITH OUR SPECIALIST

BROWSE THROUGH VARIOUS LIGHTING  
OPTIONS IN OUR CATALOG

SHORTLIST YOUR PREFERRED LIGHTS

PLACE ORDER

NEED CUSTOMIZATION?

PROVIDE REFERENCES/SKETCHES FOR  
CUSTOMIZATION NEEDED

WE WILL SEND CUSTOMIZATION  
OPTIONS/CONFIRMATION





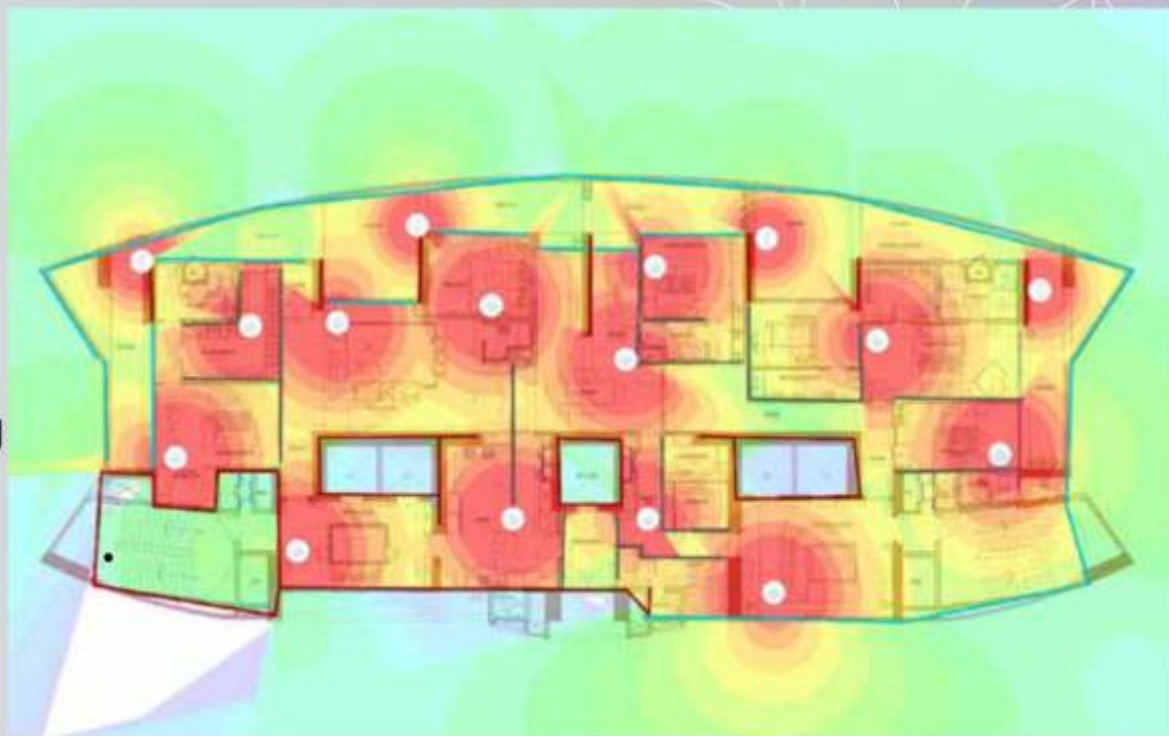
# **IN-HOUSE PLANNING & DESIGN**



# NETWORKING PLANNING AND DESIGN

Whether it's setting up a robust Wi-Fi network, surveillance network, optimizing your existing networking infrastructure, or implementing custom solutions tailored to your space, we have the expertise to meet your every needs.

- Reliable Layer 2 & 3 Networks
- Zero down time with Multi Wan routing
- Remote Support & Control
- Easy and Fast deployment of systems
- One network throughout the space with fast roaming







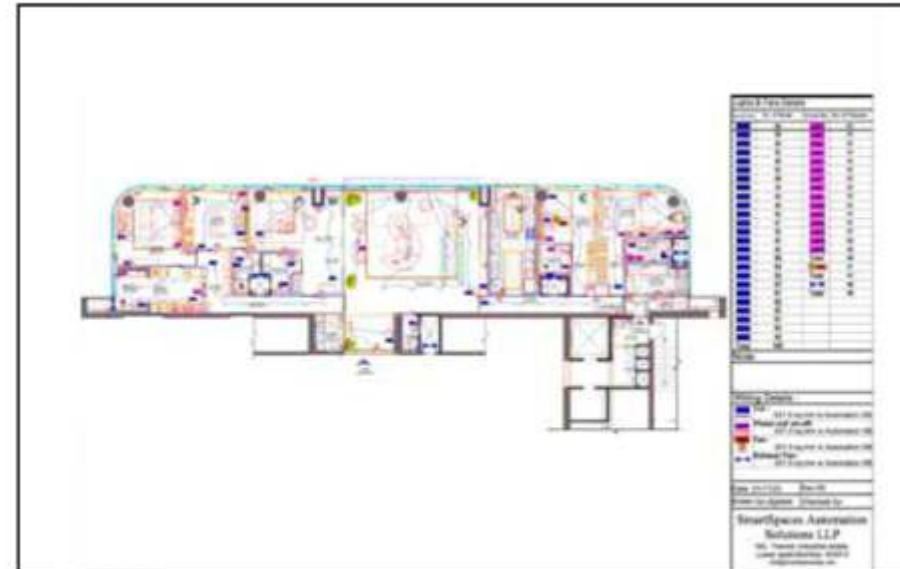
# AUDIO PLANNING AND DESIGN

- BUDGET BUILDING
- EQUIPMENT LIST
- CORRECT SPEAKER
- THROW DISTANCE
- RISER HEIGHT
- SIGHTLINES
- ACOUSTIC TREATMENT
- ELECTRICAL CONSIDERATIONS
- PAINT COLOR
- REMOTE CALIBRATION





# LIGHTING & WIRING PLANNING AND DESIGN



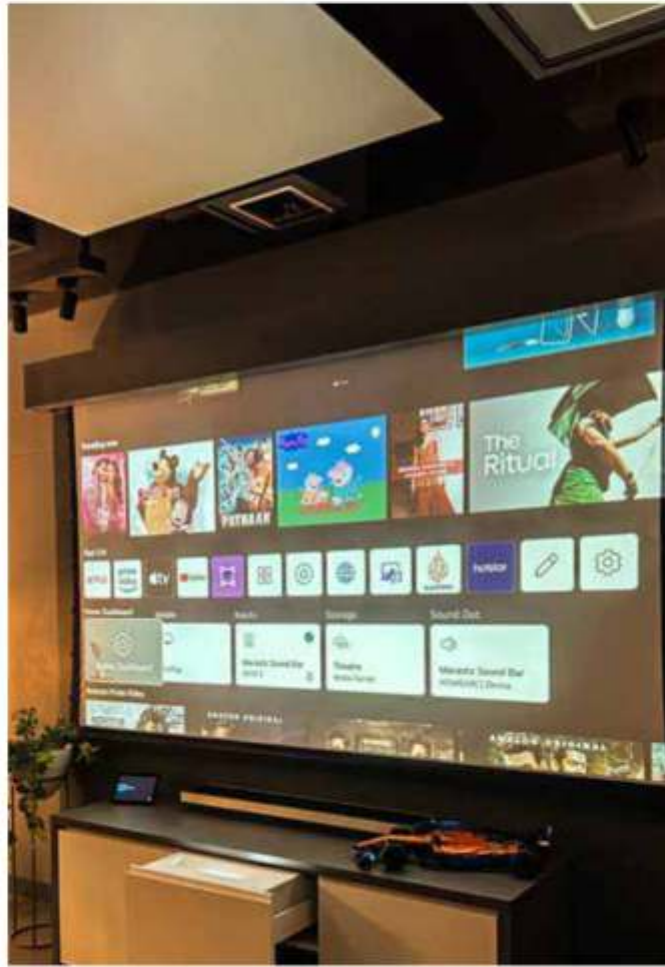




## EXPERIENCE CENTRE

Our Flagship Experience Center, located in Lower Parel, Mumbai, India amidst interior design-centric stores, offers a comprehensive range of solutions from security to cutting-edge audiovisual systems.

The space also serves as a platform for training sessions, empowering professionals with the latest in lighting & automation trends.







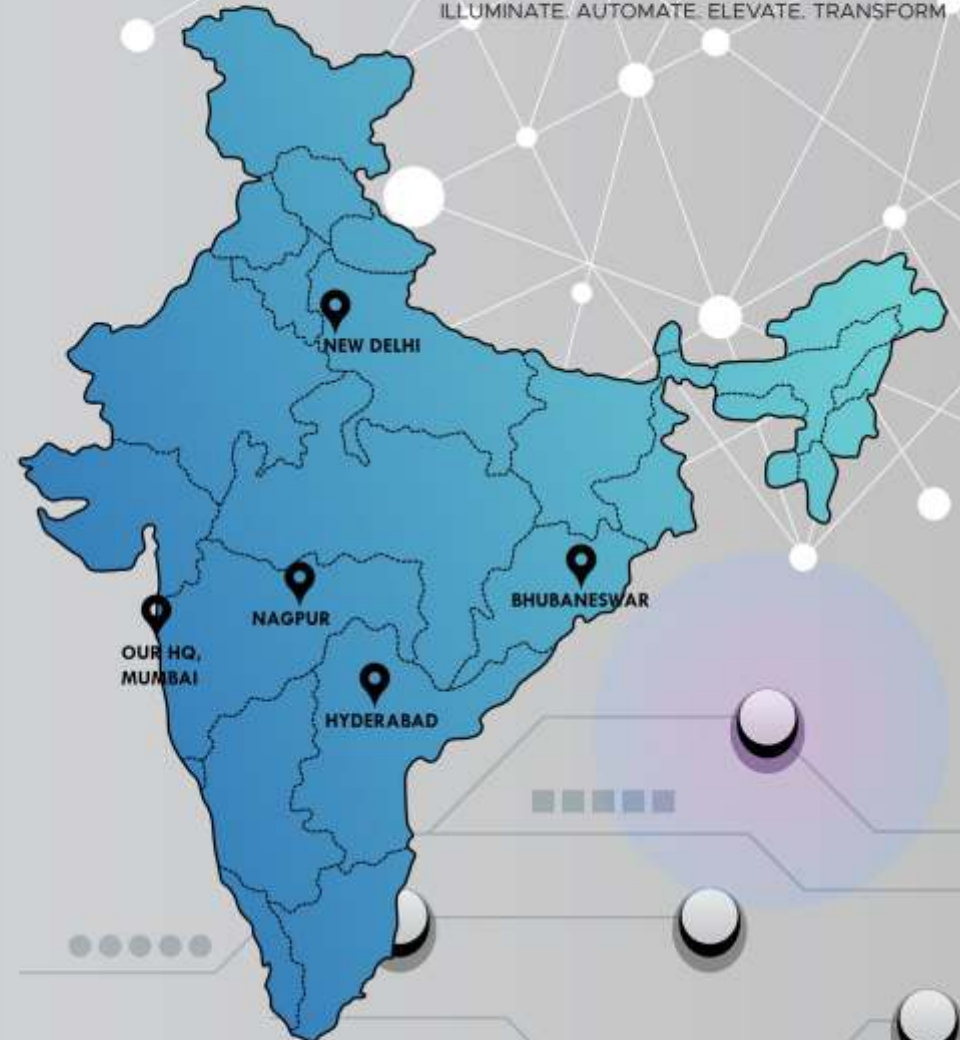
## OUR PARTNERS



Where Unique Services Create Smarter Spaces

# UNISER SMARTSPACES

ILLUMINATE. AUTOMATE. ELEVATE. TRANSFORM





## CLIENTELE



DADACHANJI GROUP



nesco

**DELTA**  
CORP LIMITED

**POLYCAB**  
IDEAS. CONNECTED.

**JOCKEY**

**Lorenz**

**CarTrade**.com



**kotak**

**IHCL**



**FanCraze**

**TRAFIGURA**

**VENUS JEWEL**  
WORLD LEADERS IN SOLITAIRE

**WARBURG PINCUS**



**Avestha**  
Fund Management

**AUGMONT**  
GOLD FOR ALL



**VERITAS**  
LEGAL SERVICES



**pinkberry**



**LIVSPACE**

**ARYA**  
INDUSTRIES

**FOUNDATION**  
HOLDINGS

**M2M**  
FERRIES

**PVR**  
**INOX**  
LIVE the MOVIE

**STRANGER**  
& SONS



**california**  
PIZZA KITCHEN



**WAMAN HARI PETHE**  
JEWELLERS



**DDS**

**FOOD**  
MATTERS  
GROUP



**HEADS UP FOR TAILS**  
EST 2008



**Saigal SeaTrade**  
CATALYST BY PROFESSION



**DIANCO**  
Bringing diamonds to life

**RAJSI GROUP OF COMPANIES**  
*A Nagrecha Family Enterprise*





# CLIENTELE



SHOPPERS STOP







# OUR PROJECT GLIMPSES







# OUR PROJECT GLIMPSES





# OUR PROJECT GLIMPSES





## **Uniser Smartspaces Pvt. Ltd.**

**HO:** 414, Lotus House, New Marine Lines, Mumbai 400020, India

**Experience Lounge:** 1st Floor, Thacker Industrial Estate, Lower Parel  
Mumbai 400011, India

**Manufacturing Facility:** Aaima Industrial Estate, Vasai (E),  
Palghar 401 208, MH, India

☎ +91-22-35114465 | +91-22-22000515

☎ +91-9867625686

✉ projects@uniserledlights.com | projects@unisersmartspaces.com

🌐 www.uniserledlights.com | www.unisersmartspaces.com